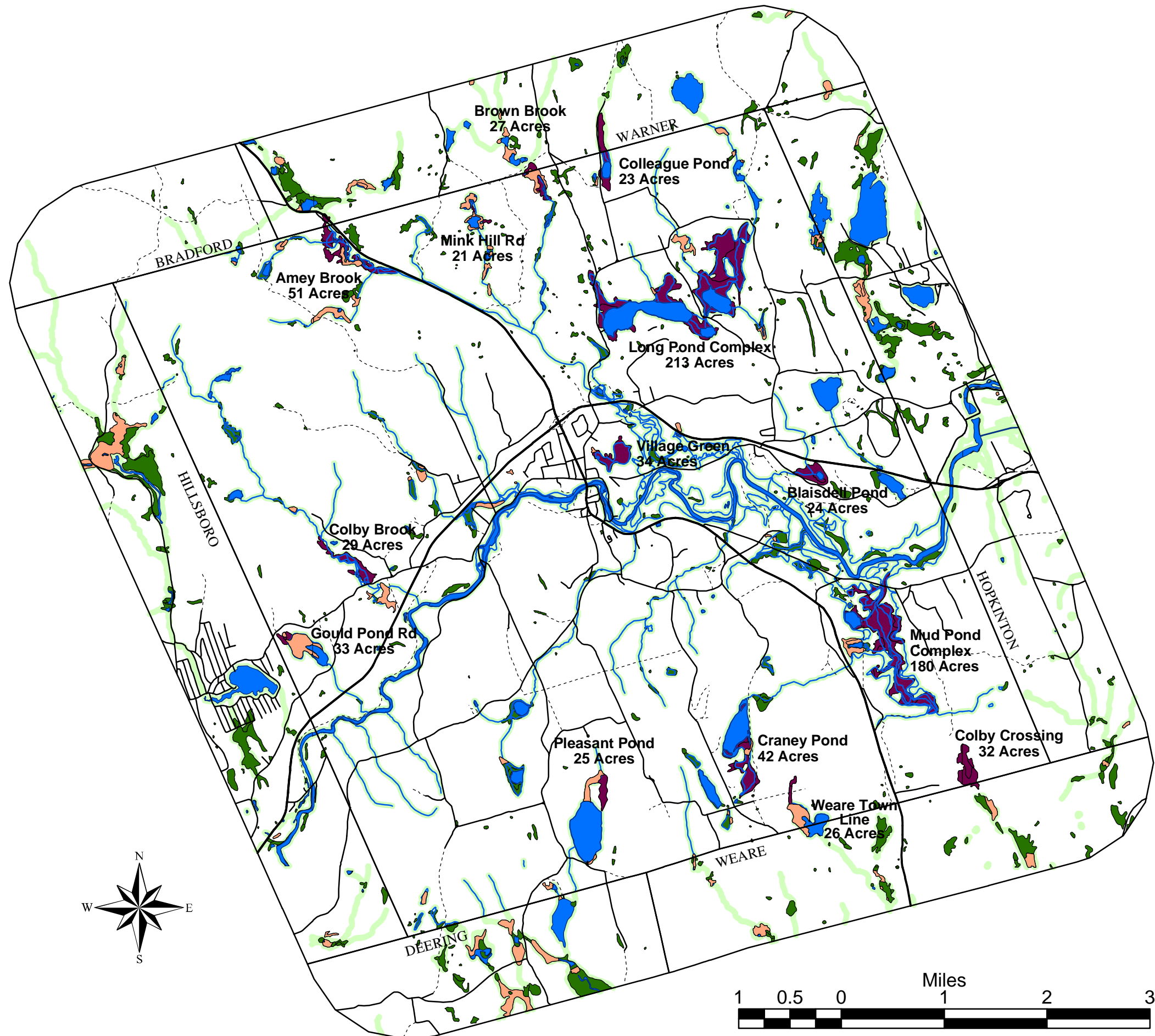


Map VIII Henniker, NH Riparian and Wetland Habitat



LEGEND

- Major Roads
- Roads
- Surface Waters
- Streams
- Wetland Complexes over 20 Acres
- Palustrine Emergent Marsh
- Other Wetlands
- 300' Riparian Buffer

DATA SOURCES:
NH GRANIT (1:24,000)
Road base supplied by the Central NH Regional Planning Commission.

Map created by Denise Rico for the Henniker Conservation Commission
December 1, 2000.
Revised: January 25, 2001, April 9, 2002, August 23, 2002, September 6, 2002,
February 18, 2005.

Digital data in NH GRANIT represent the efforts of the contributing agencies to record information from the cited source materials. Complex Systems Research Center (CSRC), under contract to the Office of State Planning (OSP), and in consultation with cooperating agencies, maintains a continuing program to identify and correct errors in these data. Neither OSP nor CSRC make any claim as to the validity or reliability or to any implied uses of these data.

