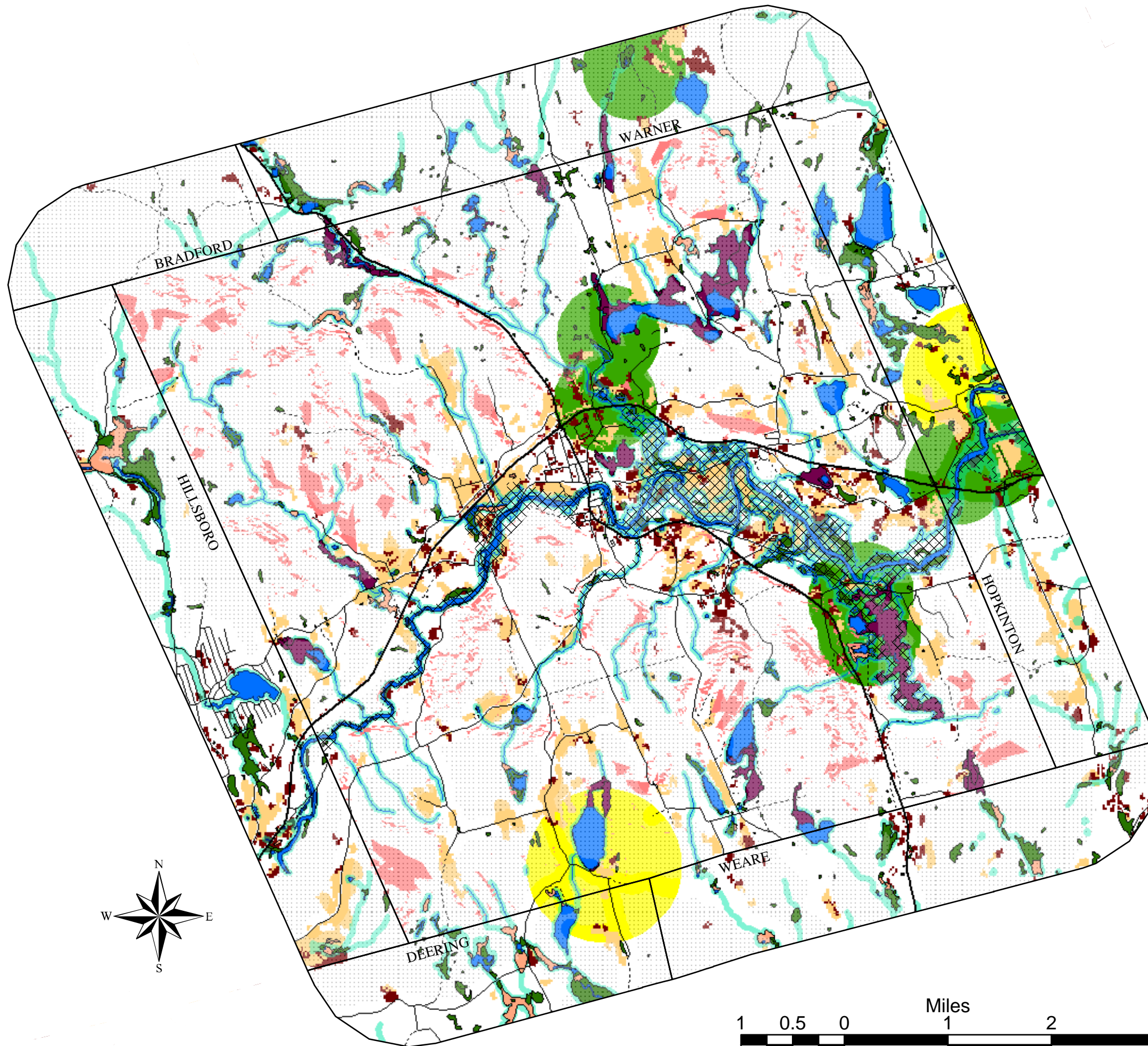
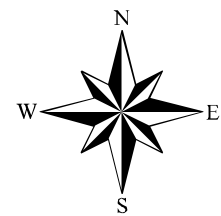


Map XI Henniker, NH Wildlife Habitat Composite



LEGEND

- Major Roads
- Roads
- Streams
- Surface Waters
- 300' Riparian Buffer
- ▨ Floodplain
- Wetland Complexes > 20 Acres
- Palustrine Emergent Marsh
- Other Wetlands
- Agricultural Open Land
- Disturbed Land
- South-facing slopes >10%
- ▨ Unfragmented Lands
- Rare Plant(s), Wildlife, and/or Natural Community
 - Precise location within circle known.
 - Occurrence within circle, but precise location not known.



This map illustrates the general locations of rare plants, wildlife, and natural communities (natural communities are different types of wetlands, forests, etc.). Precise locations are not shown due to the data's sensitive nature. The NH Natural Heritage Inventory's database contains more detailed information including locations, population sizes, and habitat descriptions.

Please contact the Natural Heritage Inventory at (603) 271-3623 for more information. Wildlife occurrences are compiled and displayed in cooperation with the NH Fish & Game Department's Nongame Program, who may be reached at (603)271-2462.

DATA SOURCES:
NH GRANIT (1:24,000)

Map created by Denise Rico for the Henniker Conservation Commission
December 1, 2000.
Revised: January 25, 2001, April 9, 2002, August 23, 2002, September 6, 2002, March 24, 2005.

Digital data in NH GRANIT represent the efforts of the contributing agencies to record information from the cited source materials. Complex Systems Research Center (CSRC), under contract to the Office of State Planning (OSP), and in consultation with cooperating agencies, maintains a continuing program to identify and correct errors in these data. Neither OSP nor CSRC make any claim as to the validity or reliability or to any implied uses of these data.